

# CREATING THE ULTIMATE INFORMATION ENVIRONMENTS FOR PEOPLE . . .



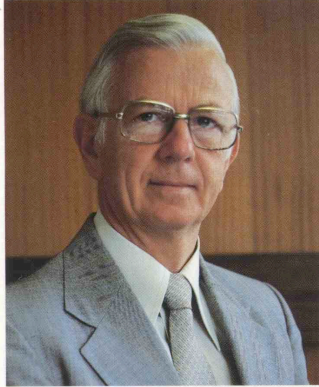
**PROGENT**  
SOLUTION PROVEN SOFTWARE

# CONTENTS

1	Toward Tomorrow
2	Corporate Profile
3	Corporate Personality
4	Progeni Capabilities
5	Operating in Harmony with Objectives
6	Progeni Past & Present
7	
8	Introduction to Divisions — General Systems & Facilities Management
9	Learning Division
10	Software Products
11	Control Systems
12	Communications & Network Services



# TOWARD TOMORROW



T E Lawrence said "the dreamers of the day are dangerous men, for they may act their dream with open eyes, to make it possible".

The men and women of PROGENI are in this mould in the sense that they take the aspirations of our clients, add the technology and "make it happen". Anyone can have an idea but the art and science of making an idea a reality which can be used by ordinary people is the province of few people and few organisations. PROGENI is one of these.

Our expertise lies not just in being at the forefront of our chosen areas of technology but in our ability to understand the needs and capabilities of the people in an organisation. This means that the whole complex task of analysing the requirements, designing, implementing the system and training the users can be accomplished smoothly, reliably and economically.

PROGENI's role is that of innovator, integrator and implementor of systems of many kinds. Technological transfer capabilities, professional excellence, organisational ability and understanding combined with project management ability of a high order have been our hallmarks over many years. We not only build integrated systems containing computers or components from many suppliers, if necessary, we build systems economically. We build systems that work and that keep on working. We will continue to do so.

# CORPORATE PROFILE

## An Environment Hard Won Through Experience

It is essential to balance any organisation's past against its present when assessing the future. Only by charting accomplishment can a value judgment be formed about its integrity and likely performance.

PROGENI has shown over considerable time an enviable result in both performance, endurance, and integrity traits; which some others in the computer industry have often failed to develop.

This stability is also remarkable because it has been expressed on an international scale.

Founded in 1968, without formal affiliation to any supplier of mainframe hardware (an independence preserved to this day), PROGENI began as it intended to continue.

Now a source of high technology computer systems, applications software and peripherals, this foremost systems house has always

answered the needs of automated information processing ahead of time.

In the late 1960s and early 1970s PROGENI software realised for users the benefits of mainframe computers.

PROGENI's forte was the development of task specific software programs for commerce, industry and government agencies, and the complete design and implementation of major mainframe database system projects.

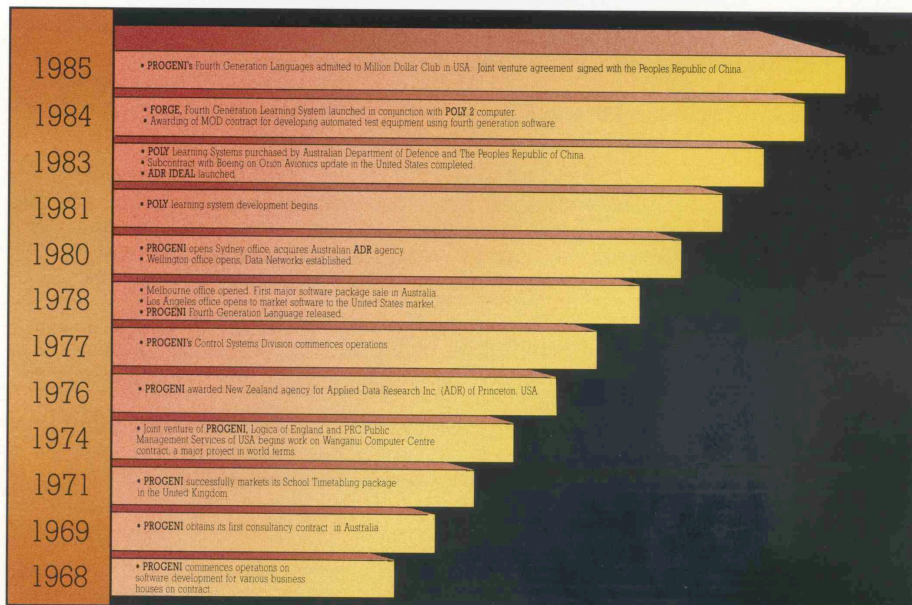
Maintaining such work into the late 1970s and beyond, this second decade found PROGENI specialists pioneering development in the area of software internationally accepted today as Fourth Generation Language (4GL), but then a dramatic new dimension in programming automation.

PROGENI's 4GL brought factory-type production line automation to the preparation of software code, greatly simplifying and speeding

previously laborious, time-intensive aspects of repetitive coding within programs.

There are now many similar systems in use, including those PROGENI itself has brought to the fields of training and instructional support. Nevertheless, the fact that the original Fourth Generation product, is now increasingly sought after demonstrates that the product was well ahead of its time when it was released in 1978.

No division of the PROGENI operation ever stands still, or rests on past laurels. In the run up to today, the company has successfully initiated a considerable diversity of products, services and projects, covering all facets of information processing. Whatever people have expected from systems automation, PROGENI has striven to provide. Its total professionalism is as ready today for tomorrow as it was when it first began.





# CORPORATE PERSONALITY

## Designers, Integrators and Implementors in Every Sphere

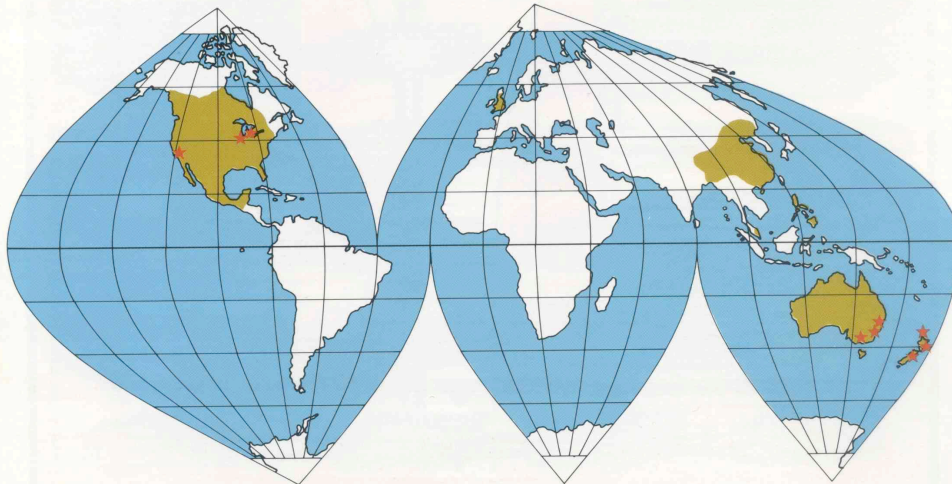
Australasia's leading computer software and communication systems resource, PROGENI is applying practical solutions to the opportunities created by diverse technologies emerging from the information age. The company has won considerable international recognition for its work in advancing information engineering technologies without geographical constraint, and fosters at all times a mutually beneficial flow of 'leading edge' concepts to and from high technology centres spread over two hemispheres. Similarly, PROGENI people are to be found everywhere there is a demand for their services. While Australasia has the main concentration of permanent offices and operational sites, strong demand for PROGENI software services in the Northern

Hemisphere now support regional offices in the United States. Dedicated to excellence in all the services it performs, PROGENI from its inception in 1968 has maintained this policy as its operations have evolved in keeping with the fast-paced changes in computing. Developments have involved so much ground-breaking work in all industry sectors that PROGENI can claim a priceless and almost unique advantage for its diverse, in-depth and vigorous skills; skills balanced by operational maturity based on long experience. This practical reality supports all PROGENI activities. Systems design and implementation; industrial control systems; learning support and training systems; communications and data networks; consultancy and facilities management.

PROGENI is unequalled in Australasia in terms of its innovative solutions and creative approaches to problems. Our work consistently enlarges the boundaries of the growing science of information engineering. With specialist staff exhibiting highly — developed levels of skill, expertise and professionalism, we believe as Designers, Integrators and Implementors of complete system solutions that we deliver practical working benefits to the user. Evolving in such a climate has led to the current advances in fourth generation software environments being applied by PROGENI to commerce, industry and training long before their potential had suggested itself to others.

★ PROGENI SITE OFFICES

PROGENI CUSTOMER SITE AREAS



# PROGENI CAPABILITIES

## Team Solutions Appropriate to the Situation

A lot of creative people stand behind PROGENI's uncommon ability to innovate. They also contribute a tried and proven operational structure which ensures the proper execution of assignments.

PROGENI attracts and maintains a large body of highly motivated, qualified and experienced consultant and technical staff, who work within a goals oriented structure of great depth. This essential creative resource underpins all project, product and general service activities across the company and throughout its divisions, wherever they are to be found.

At this operational core, PROGENI

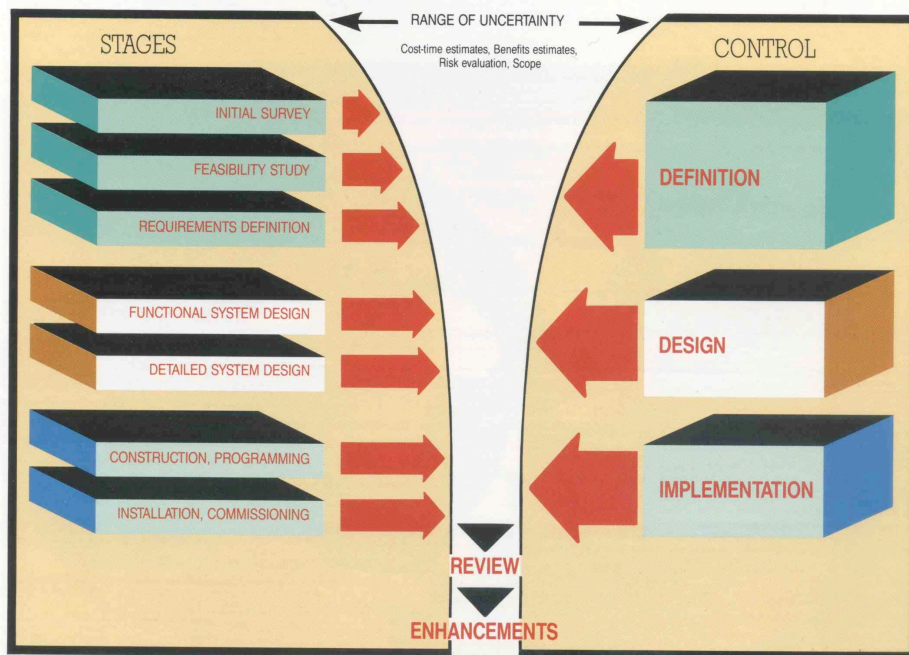
applies proven system development methods to the definition, design, documentation, implementation, user training, acceptance testing, maintenance, and on-going operational support accorded to every service bearing its name.

Professional project management techniques take pride of place. These set tough standards of excellence related to schedules of materials or components to be delivered; formal milestones (key stages of assignment completion); critical path forecasting and progress monitoring; 'on-demand' or regular progress reporting in project operations and providing deadlines for fixed total reviews of

each assignment by experienced consultants **not** already involved in the work.

The team approach used for performing the tasks provides for continued growth in capability of highly selected personnel in a disciplined environment. The range of tasks carried out by the company includes virtually all brands of machines, programming languages and operating systems. That means, as we noted earlier, total independence in client advice; PROGENI recommends only the most appropriate hardware for a particular assignment, **everytime**.

## SYSTEM DEVELOPMENT METHOD





# OPERATING IN HARMONY WITH OBJECTIVES

Having examined the strengths of PROGENI in people terms, it is also appropriate to describe the company's operational infrastructure for it is of considerable importance to the quality of performance.

A predisposition toward the matrix working format encouraged the founders of PROGENI, in common with those in other 'knowledge' related industries, to adopt this kind of environment.

The matrix has proven a superb stimulus to creative thinking and expression, and it has resulted in a free-ranging working environment which greatly benefits all clients of the PROGENI organisation.

Although stereotyped rigid administration practices are considered inappropriate to PROGENI, active management control is as essential as in any

other well-run company.

PROGENI applies such management control by applying its own technology to enable the proper functioning of this matrix organisation. This allows the discreet but effective supervision essential in a rapidly-changing commercial environment.

It permits the full drive and creativity of high-performance professionals to be brought to bear on defined goals with the necessary minimum of control and frustration.

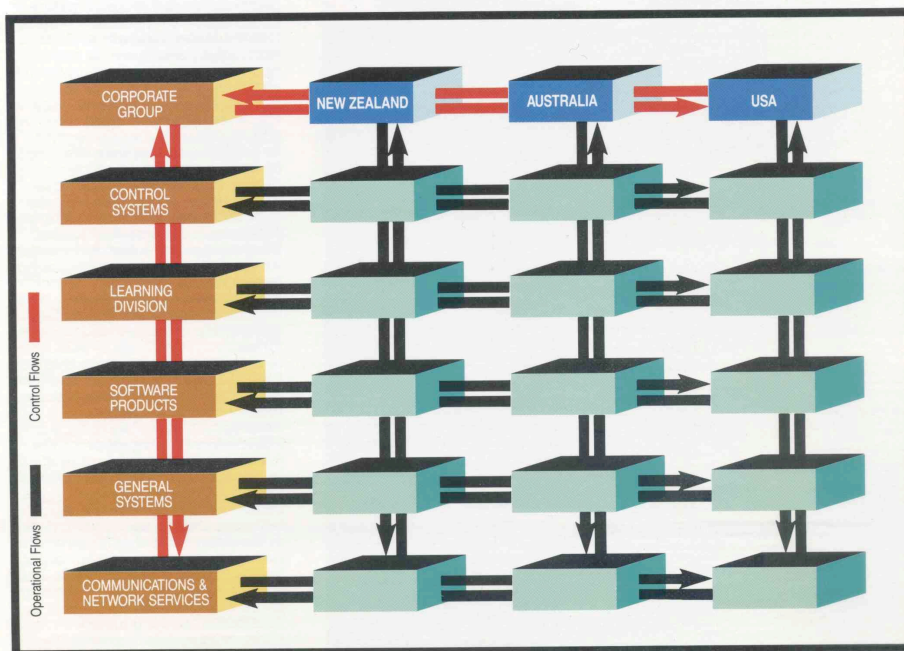
Classical Corporate functions are restricted to a handful of senior executives.

Beyond these people, the PROGENI matrix structure applies to the operations of each of the divisions acting in concert with the country and office organisation

which is in contact with the client. Currently, these divisions provide services in proprietary software, learning support, industrial control systems, general projects and communications and network systems.

PROGENI offices in North America, Australia and New Zealand provide a varied mix of services according to customer demand experienced at the specific location. This method of focussing a full range of professional expertise on the client's problems epitomises the spirit of the matrix concept.

The company also places its project management and technical staff on location in areas outside the permanent office network to cater for international assignment operations.



# PROGENI PAST & PRESENT

## The Proven Assurance of Previous Performance



As befits any leader of its industry, the PROGENI organisation can lay claim to a diverse operational experience.

Much of this has been ground-breaking work in areas lacking previous contact with a systems approach. From major development projects to facilities management and 'turnkey' work PROGENI has exhibited consistent innovation appropriate to the assignment. A brief cross-section of past assignments illustrates the point.

Through a joint venture, PROGENI was responsible for developing software for the Wanganui Computer Centre. This is one of the world's most comprehensive computer-based criminal justice information systems. The centrally-located large database system services a nationwide on-line enquiry network and supports the short and long-term work of all New Zealand Government agencies involved in law enforcement.

In similar vein, the company used its extensive systems abilities to design and develop a specialised information and communications system for the Victorian Police in Australia. It also created around this time a unique switching system for Australasia's two leading radio networks. The switching over of programmes at key points of transmission now occurs to a completely computer programmed format.

In a most significant assignment, PROGENI staff worked in North America as subcontractors to the Boeing company on the development of software for on-board aircraft computers for the RNZAF Orion aircraft.

In other areas of defence support, PROGENI has supplied a considerable number of POLY learning support microcomputers to the Army School of Signals in Australia. Installing its own micro hardware and software, PROGENI also 'trained the trainers' in charge of the new equipment.

TESTMATE an automatic test equipment system has become another milestone in PROGENI



Control Systems development. Designed primarily to automate the testing of electronic communications equipment for the military, TESTMATE has ably demonstrated that any organisation involved in electronic manufacturing, servicing or process control will directly benefit from the time and cost savings it provides.

PROGENI is an active marketer of software products as well as consultancy and one-off services. The chosen products are mostly ones which improve efficiency, productivity, ease of use or reliability for professionals and end users alike rather than fixed application packages. The company's own Fourth Generation Language Systems are used by clients in every spectrum of business, especially in North America. They vastly improve the output of programming personnel or users especially in complex, on-line and database situations.

Communications services are especially vital to a commercial operation. For a major New Zealand investment society, PSIS, PROGENI operates a comprehensive resource which includes packet switching facilities — a sophisticated communications method which gives maximum efficiency in the use of telephone lines. This installation also includes a total on-line banking system designed and built completely by PROGENI to the PSIS requirements.

Finally, PROGENI's custom-built systems 'packages' are marketed to a wide range of end-users, with principal emphasis falling on the food processing sector in both New Zealand and Australia.

The systems cover set-weight carton monitoring; production reporting; automatic carton identification; weighing and labelling; automatic constituent measuring; mixing and processing to formula; voice-activated data registration and radio/television line switching. New 'packages' are being constantly added to the overall product selection.



# SOFTWARE PRODUCTS



The Software Products Division of PROGENI provides the distribution, installation and on-going support of software package products represented by the company in Australasia. The Division is also responsible for the delivery of PROGENI Fourth Generation Language Systems in that marketplace.

Much of this activity is associated with the comprehensive product range of software giant ADR (Applied Data Research Inc. of Princeton, New Jersey).

ADR products are world leaders, designed to support the three "centres" of system software operation — the information centre, the development centre and the production centre using IBM or IBM-compatible equipment.

ADR's information centre concept gives management instantaneous access to complete and current information, accessed and analysed with ADR's query and decision support software.

By contrast, the development centre caters for greater application development productivity through fourth generation products. ADR offers, through PROGENI, an array of thoroughly-integrated productivity tools suited to the professional developer — fourth generation language IDEAL; on-line programming and program

management systems from ADR serve these functions. The Production Centre concept is based on relational database and active datadictionary products which provide the basic foundation of all system software environments. The ADR production centre database is unique in that it can simultaneously support development centre and information centre processing. PROGENI's Software Products Division is also responsible for the following proprietary software:—

## **SYNCSORT**

A high performance efficient sort program for IBM mainframes. Faster than IBM sort, Syncsort is used by 75% of all MVS sites.

## **USERTAB/FILETAB**

From NCC of Great Britain PROGENI offers Usertab and Filetab — highly sophisticated tools for computer professionals and end-users in ICL and IBM environments.

## **PROGENI FOURTH GENERATION LANGUAGES**

A particularly powerful Burroughs software generation aid which simplifies and enhances programming work with an emphasis on in-house situations.





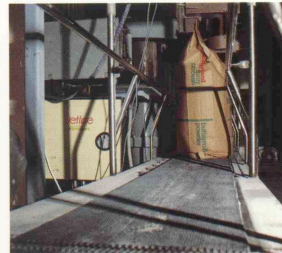
# CONTROL SYSTEMS

Active in the specialist area of industrial control systems, PROGENI's Control Systems Division are increasing manufacturing productivity throughout Australasia. The Division employs "state of the art" high technology devices in its products which combine advanced software development and hardware skills for optimum automation in industrial processes and information systems. PROGENI's unique ability to provide custom-built systems ensures that problems concerned with manufacturing productivity, quality control and industrial automation are effectively solved.

PROGENI is a recognised pioneer in many of the automated systems and their functions include:—

- Product weight monitoring
- Production reporting
- Automatic product identification
- Weighing and labelling
- Automated batching through constituent measuring
- Mixing and processing to formula
- Voice activated data registration
- Radio/television line switching
- Precise liquid measurement
- Alarm annunciation
- Control of energy usage
- Ink jet labelling facilities
- Weighbridge goods receipt
- Quality control and reporting

The extensive capabilities, reliability and cost efficiency of PROGENI industrial control systems results from the dramatic advances in microprocessor and software program development. PROGENI's specialist-trained systems engineers who design and develop them are experienced capable technical specialists whose abilities range from basic consultancy to utilising the latest high-tech devices in developing optimum systems in the area of industrial automation.



## COMMUNICATIONS & NETWORK SERVICES

PROGENI has placed a great deal of importance on the development of a comprehensive real time network and bureau service, linking all major New Zealand cities and towns to a central computer site located in Wellington.

Data Networks, a part owned PROGENI subsidiary, operates the facility catering for the off-site computer needs of the business

community. This nationwide system operates through a set of geographically distributed mini computers each of which acts independently of the mainframe facility.

Users located anywhere in the country can communicate with other offices in their organisation and also draw on the full power of the central facility as required. Many application packages are

available, alternatively the software expertise of PROGENI can be engaged to develop a system to the client's precise requirements. Using the Burroughs mainframe equipment and Perkin Elmer nodes as a distributed system enables Data Networks to offer full computer resources 'on tap' without the operational and cost overhead premiums of in-house facilities.





# PROGENI CUSTOMERS WORLDWIDE

Accident Compensation Commission  
 Allied Computer Processors Ltd  
 Arthur Yates & Company Ltd  
 ACI Computer Services  
 Ambulance Service Melbourne  
 Air New Zealand  
 Ansett Airlines of Australia  
 Auckland Regional Authority  
 Australian Broadcasting Corporation  
 Australian Department of Health  
 Australian Fertilizers Ltd  
 Australian Iron & Steel Pty Ltd  
 Australian Paper Manufacturers  
 Australian Department of Defence  
 Australian Pharmaceutical Industries Ltd  
 Australia & NZ Banking Group Ltd  
 Avon Products Pty Ltd  
 BP Australia  
 Ballins Industries Ltd  
 Berl Publications Ltd  
 Birmingham Metropolitan District Council  
 Bureau of Meteorology, Australia  
 Building Research Association  
 of New Zealand  
 BNZ Finance  
 Broadcasting Corporation of New Zealand  
 Burroughs Ltd  
 Caltex Oil Aust. Pty Ltd  
 Central Institute of Technology  
 Cone Mills Inc, USA  
 Charge Card Services  
 Comalco Aluminium Ltd — Weipa  
 Consolidated Motor Distributors Ltd  
 Dairyman's Cooperative, USA  
 Data Networks  
 Diners Club Ltd, Australia  
 Dulux Australia Ltd  
 Dulux New Zealand Ltd  
 Durham County Council  
 Education Department, Western Australia  
 Electric Power Transmission, Australia  
 Fluor Australia Ltd  
 Fiji Sugar Corporation  
 Fletcher Residential Ltd  
 General Motors Holden (Australia)  
 Glaxo Laboratories (NZ) Ltd  
 Gough, Gough & Hamer Ltd  
 Guardian Royal Exchange Assurance  
 of New Zealand  
 Guthrie Bowron & Co. Ltd  
 Gear Meat Company Ltd  
 Guest & Bell  
 Hartford-Monarch Insurance  
 Health Insurance Commission (Australia)

Henry Simon (Australia)  
 Hindmarsh Building Society  
 Home Building Society  
 Hooker Corporation Ltd  
 Hospital Benefits Association Ltd  
 Hampshire County Council  
 Henry H. York & Co. Ltd  
 Hume Industries (NZ) Ltd  
 ICI Limited (Australia)  
 ICI Limited (NZ)  
 Inner London Education Authority  
 Internorth Inc, USA  
 James Hardie Ltd  
 John Fairfax & Sons  
 John Lysaght (Australia) Ltd  
 Joint Services Pty Ltd  
 Keebler Company Inc, USA  
 Kiwi Cooperative Dairies Ltd  
 Lane Walker Rudkin Ltd  
 London Borough of Croydon  
 London Borough of Hillingdon  
 Metropolitan Permanent Building Society  
 Metropolitan Water Sewerage &  
 Drainage Board  
 Monash University  
 Michigan State Government  
 M. Y. Walls & Associates  
 Mobil Oil Australia Ltd  
 Manawatu Cooperative Dairy  
 Moa Nui Dairy Company  
 New York State Higher Education  
 Authority  
 NZ Aluminium Smelters Ltd  
 NZ Apple & Pear Marketing Board  
 NZ Electricity Division  
 NZ Industrial Gases Ltd  
 NZ Kennel Club (Inc)  
 NZ Meat Producers Board  
 NZ Motor Corporation Ltd  
 NZ Nursing Council  
 NZ Post Office  
 NZ Silencers Ltd  
 NZ Thoroughbred Breeders  
 Association Inc  
 Northern Union Life Insurance Society  
 Nottinghamshire County Council  
 NRM Feeds Ltd  
 Norman Ross Stores Pty Ltd (Australia)  
 Northern Trustee Computerbank  
 Peacocks Ladieswear Ltd  
 Philips Electrical Industries NZ Ltd  
 Pilkington Bros NZ Ltd  
 Public Works Department of Victoria  
 Public Service Investment Society

Queensland Independent  
 Wholesalers Ltd  
 R A CV (Victoria)  
 Readers Digest (Australia) Services  
 Pty Ltd  
 Repco (Australia)  
 Radio New Zealand  
 R A Jarden & Company  
 Reserve-Bank of New Zealand  
 Rheem Industries  
 Rowntree Hoadley (Australia)  
 Rexon Pty Ltd (Australia)  
 Reckitt & Coleman Ltd (Australia)  
 Rangitiki Plains Dairy Company  
 San Diego County Education Authority  
 Shell Co (Aust) Ltd  
 Shell Oil NZ Ltd  
 South British Insurance Company  
 Spedding Ltd  
 Sperry Univac NZ Ltd  
 Sentry Holdings Ltd  
 State Electricity Commission of Victoria  
 State Services Commission  
 Department of Statistics, NZ Government  
 Supervalu Stores Inc  
 Sun Alliance Insurance (Australia)  
 Statewide Building Society  
 State Insurance (Australia)  
 Society Systems (Victoria)  
 State Electricity Commission (Victoria)  
 Totalisator Board of Western Australia  
 Tegel Poultry  
 Tooheys Ltd  
 Turnbull & Jones Ltd  
 TNL Group Limited  
 Underdale C.A.E.  
 University of Canterbury  
 University of Otago  
 University of Sydney  
 Unilever NZ Ltd  
 Victorian Police Department  
 Victoria State Insurance  
 Wattie Industries Ltd  
 Wellington Hospital Board  
 Wellington Polytechnic  
 Westinghouse Credit Corporation  
 Wellington Regional Planning Authority  
 Wigan Metropolitan District Council  
 Wiltshire County Council  
 W.R. Grace Australia Ltd  
 Westpac Banking Corporation  
 Waikato Valley Authority  
 Waikato University

# PROGENI

**SOLUTION PROVEN SOFTWARE**

**AUCKLAND**  
Levin Building  
Cnr. Airedale &  
St Pauls Streets  
PO Box 9400  
Auckland  
New Zealand  
Tel. (09) 786-977

**WELLINGTON**  
Investment House  
Cnr. Whitmore &  
Featherston Streets  
PO Box 2055  
Wellington  
New Zealand  
Tel. (04) 720-820

**LOWER HUTT**  
14-18 Pretoria Street  
PO Box 44107 VIC  
Lower Hutt  
New Zealand  
Tel. (04) 666-014

**CHRISTCHURCH**  
Ground Floor  
271 Madras Street  
PO Box 13027  
Christchurch  
New Zealand  
Tel. (03) 795-453  
795-467

**SYDNEY**  
Suite 5, Level 4  
Chatswood Plaza  
PO Box 745  
Chatswood, NSW 2067  
Australia  
Tel. (613) 419-6300  
412-8159

**MELBOURNE**  
68 Burwood Highway  
PO Box 230  
Burwood, VIC 3125  
Australia  
Tel. (612) 288-7366

**CANBERRA**  
Suite 5, Nettleford Plaza  
Nettleford Street  
P O Box 797  
Belconnen, A.C.T. 2616  
Australia  
Tel. (612) 514067

**LOS ANGELES**  
715 North Central Ave  
Glendale  
California 91203  
United States of America  
Tel. (818) 956-0251

**DETROIT**  
31505 Grand River  
Farmington  
MI 48034  
United States of America  
Tel. (313) 471-3113