



CENTRE FOR  
Artificial Intelligence  
and Public Policy

*Te tari Rorohiko Atamai,  
Kaupapa Here Tūmatanui*

# Government Use of Artificial Intelligence

James Maclaurin

Centre for Artificial Intelligence and Public Policy  
Artificial Intelligence and Law in New Zealand Project



Department of Philosophy • University of Otago





# China's Social Credit System

---

- A national system to standardise citizens' and businesses' economic and social reputation.
- Announced in 2014, it is to be completed by 2020 and details are still sketchy.
- The scheme will apply to both people and businesses and it will focus on "honesty in government affairs", "commercial integrity", "societal integrity", and "judicial credibility".
- It will take into account a wide range of data about you and your friends.
- The scheme *might* influence:
  - travel and public services including internet
  - education and employment
  - social status



# China has started ranking citizens with a creepy 'social credit' system -- here's what you can do wrong, and the embarrassing, demeaning ways they can punish you

ALEXANDRA MA

APR 9, 2018, 6:07 AM





# BLACK MIRROR



Bryce Dallas Howard in “Nosedive”  
Series 3, Episode 1 of *Black Mirror*  
Directed by Joe Wright

# In New Zealand...

---

- We are doing something that is a little like social credit.
- NOT creepy and authoritarian
- But we are employing big data to produce lots of 'scores' for New Zealanders in many contexts.



# In New Zealand...

---

ACC	Automated claims approval Conversion probability Expected claims outcome Rehab tracking Financial Impact Smart support Fraude, waste and abuse
Corrections	Risk of Reconviction / Risk of Re- imprisonment “RoC*RoI”.
Internal Affairs	Passport applications Passport facial recognition Passport risk Birth and death registration Citizenship by birth





# In New Zealand...

---

Inland Revenue	Automatic refund Good comparator tool (estimating company tax suppression)
Business, Innovation and Employment	IDMe (Identity Management) Visa application risk triage Advance Passenger Processing Passenger name records
Education	School transport route optimiser
Health	InterRAI (assessing health needs of older New Zealanders) CPAC (elective surgery assessment)
Justics	Segmentation (fine resolution) Work manager Attachment orders (debt collection)



# In New Zealand...

---

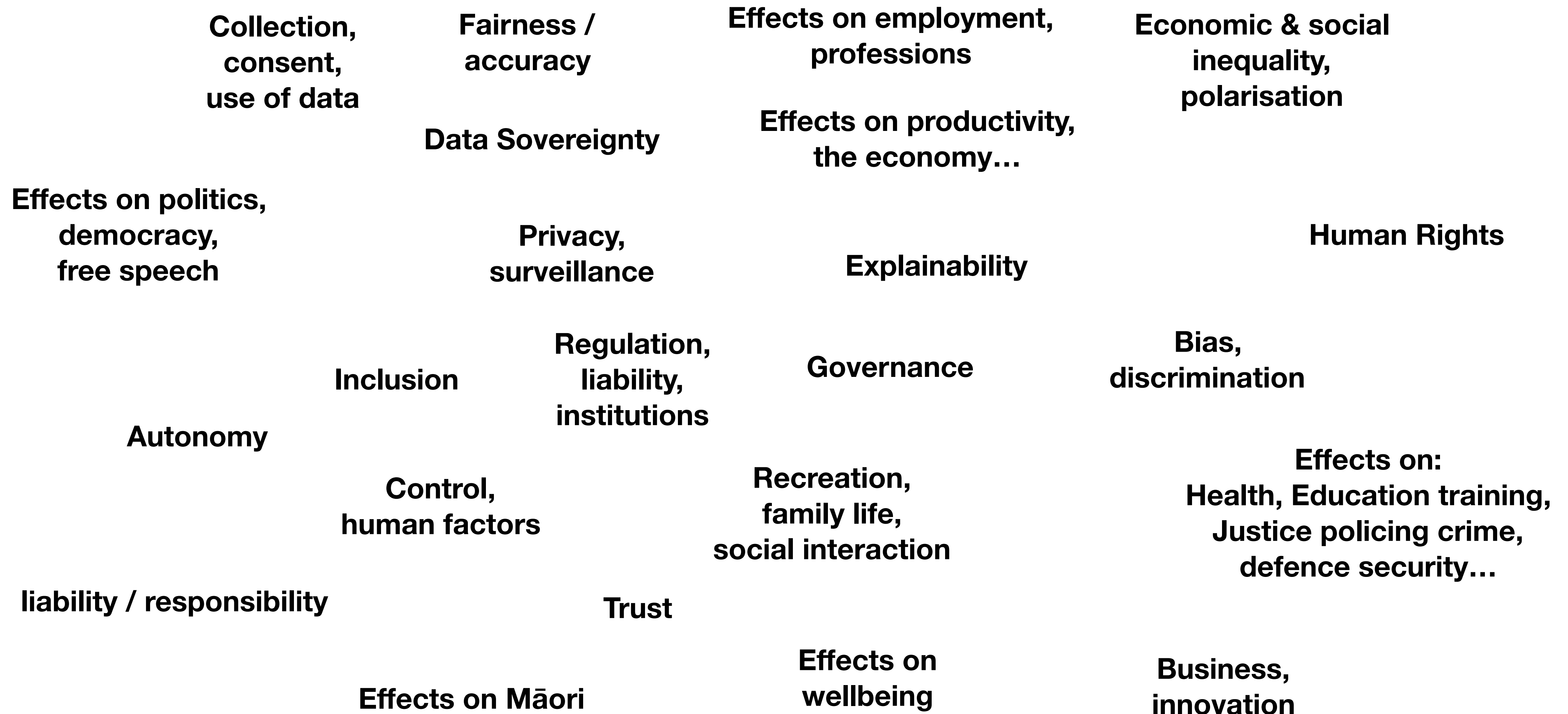
Social Development	Client Service Matching NEET (youth no in education, employment or training)
Customs	Targeting profile (detecting smuggling) Customs business improvement
Police	Youth offending risk screening tool Family violence risk assessment tools Victim History Scorecard

- These algorithms are mostly limited to central government.
- This is a stocktake not an audit





# There are plenty of challenges



# There are plenty of challenges

**Fairness /  
accuracy**

**Effects on employment,  
professions**

**Economic & social  
inequality,  
polarisation**

**Effects on productivity,  
the economy...**

**Human Rights**

**Explainability**

**Regulation,  
liability,  
institutions**

**Governance**

**Bias,  
discrimination**

**Control,  
human factors**

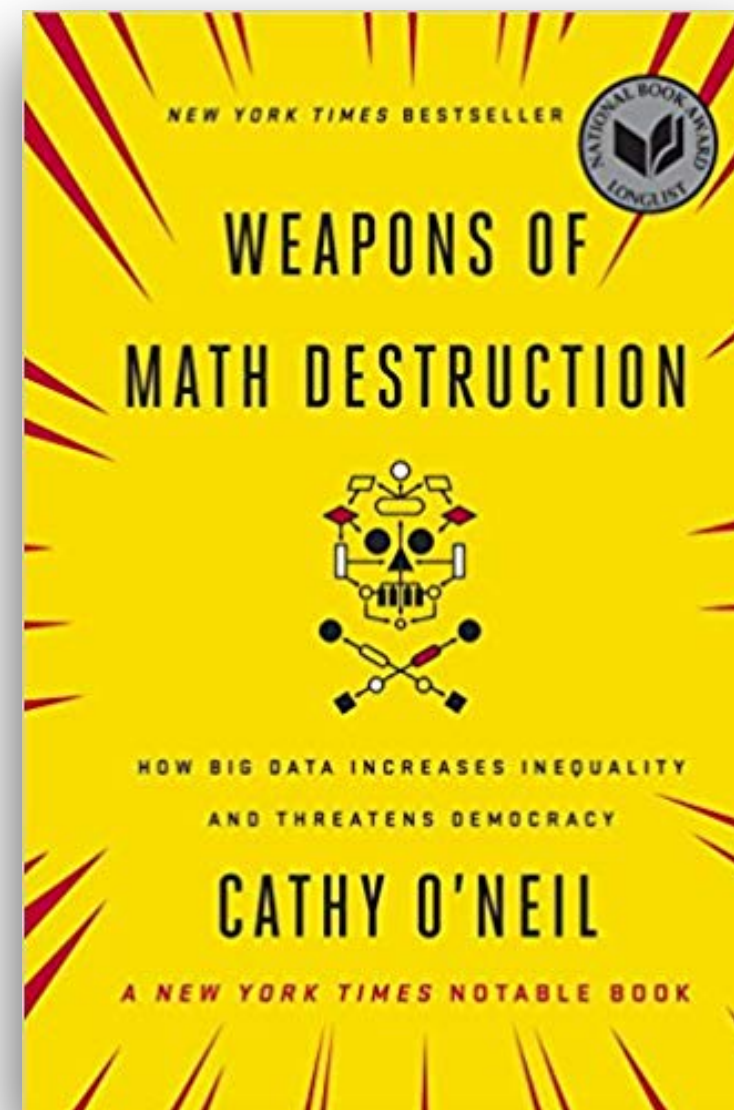
**Justice policing crime,**



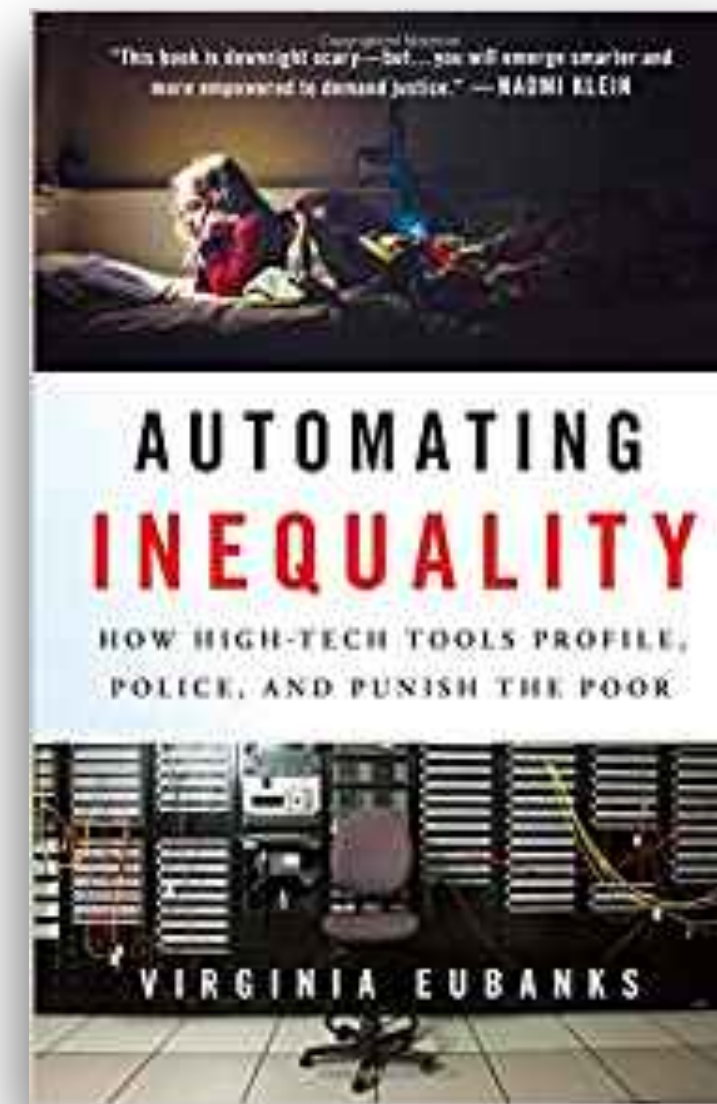
# Some things New Zealand needs to watch out for

---

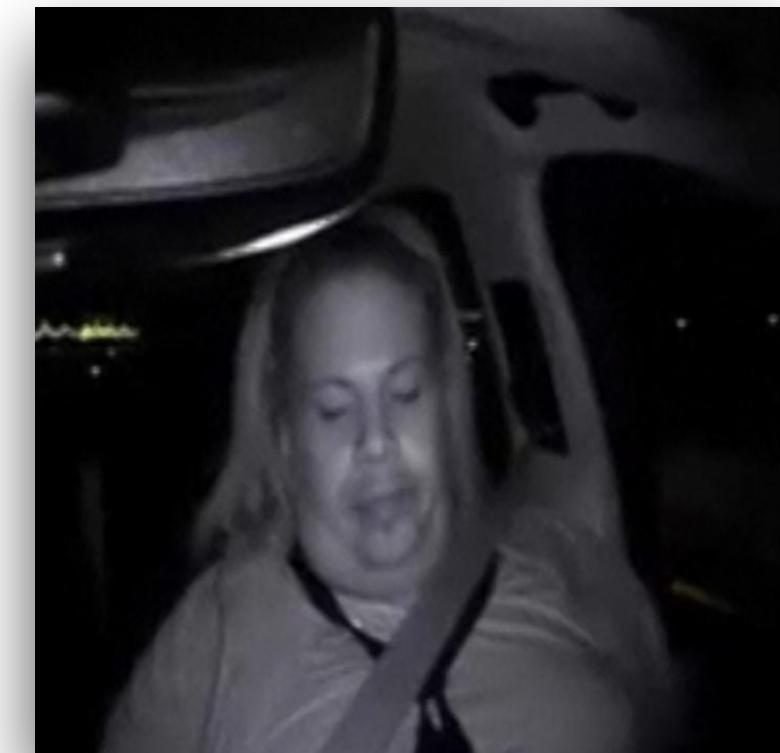
Bias



Inequality



Control



# There have been plenty of miss-steps along the way...

---

## Children 'not lab-rats' - Anne Tolley intervenes in child abuse experiment

STACEY KIRK

Last updated 05:00, July 30 2015





There have been plenty of miss-steps along the way...

---

## Immigration NZ's data profiling 'illegal' critics say

5 Apr, 2018 11:12am

🕒 2 minutes to read



# On a positive note

---

- New Zealand's focus on social investment has made us think of algorithms as an important part of government, worthy of scrutiny and crucial to our success.
- We've learned some important lessons.

